



**2020 OPEN FINN EUROPEAN CHAMPIONSHIP  
U23 FINN EUROPEAN CHAMPIONSHIP  
2020 FINN EUROPEAN MASTERS**

30th August 2020 to 6th September 2020  
Gdynia, Poland

**Organizing Authority:**

**Polish Yachting Association in conjunction with the International Finn Association, the International Finn Masters Committee (IFMC) and the Polish Finn Association**

**SAILING INSTRUCTIONS**

**1 RULES**

- 1.1 The regatta will be governed by the rules as defined in The Racing Rules of Sailing (RRS) and the Finn Major Championship Event Manual and Finn Masters Event Manual.
- 1.2 No national authority prescriptions will apply.
- 1.3 Decisions of the International Jury will be final as provided in RRS 70.5.
- 1.4 If there is a conflict between languages the English text will take precedence.
- 1.5 Appendix P, Special Procedures for Rule 42, will apply, with the following change for the Masters Fleet: P2.3 is deleted and P2.2 will apply to a third and subsequent penalties. And in accordance with Class Rule A.6.2, the recommended wind speed for Class Rule C1.1 (2) for the Masters Fleet is 12 knots.
- 1.6 Spare
- 1.7 In all rules governing this regatta;
  - 1.7.1. [NP] denotes a rule that shall not be grounds for protest by a boat. This changes RRS 60.1(a).
  - 1.7.2. [SP] denotes a rule for which a standard penalty may be applied by the race committee or technical committee without a hearing (this changes RRS A5);
- 1.8 In RRS 44.2 insert after the first sentence: However if Mark 1a is set, a boat may delay taking a penalty for an incident in the zone around Mark 1 or on the leg between Mark 1 and Mark 1a, until she has passed Mark 1a.

**2 SAFETY REGULATIONS [DP][NP]**

- 2.1 Competitors shall wear personal flotation devices at all times while afloat, except briefly while changing or adjusting clothing or personal equipment.
- 2.2 Spare
- 2.3 Boats not leaving the shore for a scheduled race shall promptly notify the Race Office.
- 2.4 On arrival at the racing area, boats shall sail closely by the race committee vessel, clearly showing their sail numbers.
- 2.5 A boat that retires from racing shall notify the race committee before leaving the racing area, or if that is not possible, shall notify the race office as soon as possible after returning ashore.
- 2.6 Spare
- 2.7 When the race committee displays flag V with repetitive sounds or broadcasts 'Code Flag Victor' on the designated VHF Channel, all official and support boats shall monitor VHF Channel 77 for search, rescue and other instructions.

**3 CODE OF CONDUCT [DP][NP]**

- 3.1 Competitors and support persons shall comply with any reasonable request from a regatta official.



- 3.2 Competitors shall handle any boats or equipment provided by the organizing authority with proper care and seamanship, and in compliance with any written instructions.

#### 4 RACING DAYS and OFFICIAL FUNCTIONS

Date	Time	Stage/Function	Location
Sunday, 30 <sup>th</sup> August	1000-1800	Measurement/	Marina Gdynia
Monday, 31 <sup>st</sup> August	1000-1800	Registration	
Tuesday, 1 <sup>st</sup> September	1000-1600		
Tuesday, 1 <sup>st</sup> September	1500	Practice Race	Course Area Bravo
Tuesday, 1 <sup>st</sup> September	1900	Opening Ceremony	Marina Gdynia
Wednesday, 2 <sup>nd</sup> September	1130	Racing	Course Area Bravo
Thursday, 3 <sup>rd</sup> September	1130	Racing	Course Area Bravo
Friday, 4 <sup>th</sup> September	1130	Racing	Course Area Bravo
Saturday, 5 <sup>th</sup> September	1130	Racing	Course Area Bravo
Sunday, 6 <sup>th</sup> September	1030	Racing	Course Area Bravo
Sunday, 6 <sup>th</sup> September	After races	Prize Giving	Marina Gdynia

The format and race schedule are detailed in Sailing Instruction Addendum FS 'Format, Time Limits and Scoring'.

#### 5 COURSE AREAS

- 5.1 The course areas are shown in SI Addendum A.

#### 6 THE COURSES

- 6.1 The diagrams in SI Addendum B show the courses, the course designations, the approximate angles between legs, the order in which marks are to be passed, and the side on which each mark is to be left.
- 6.2 No later than the warning signal, the race committee signal vessel will display the course designation and the approximate compass bearing of the first leg.

#### 7 MARKS

- 7.1 Marks 1, 1a (offset mark), 2, 3 and 4 or associated gate marks, will be as follows:

Marks 1, 2, 3, 4	Mark 1a	Replacement Mark	Finishing Outer Distance Mark
Yellow cylinder with blue band	Yellow cylinder with blue band	Green cone	Staff Red buoy with an orange flag

#### 8 CLASS FLAGS AND ADDITIONAL IDENTIFICATION

- 8.1

Class	Class flag	Additional identification
Open Fleet	Class insignia on a white background	none
Masters Fleet	Class insignia on a blue background	Burgundy ribbon

Ribbons will be available at the Race Office and are to be displayed at the top of the mast.

#### 9 THE START

- 9.1 The starting line will be between a staff displaying an orange flag on the race committee vessel at the starboard end and a staff displaying an orange flag on the race committee vessel at the port end.

9.2 To alert boats that a race or sequence of races will begin soon, the orange starting line flag will be displayed with one sound at least five minutes before a warning signal is made.

## 10 THE FINISH

10.1 The finishing line will be between a staff displaying a blue flag on the race committee vessel and the course side of the nearby finishing mark.

## 11 TIME LIMITS AND TARGET TIMES

11.1 Time limits and target times are shown in the Format, Time Limits and Scoring Addendum.

## 12 COMMUNICATIONS WITH COMPETITORS

12.1 Competitor and Team Leader briefings:

Date	Time	Briefing	Location
Wednesday, 2 <sup>nd</sup> September	0930	First briefing	Marina Gdynia in front of the sailing village tent

12.2 Notices to competitors will be posted on the official electronic notice board at [https://events.pya.org.pl/2020-open-finn-european-championship\\_e23](https://events.pya.org.pl/2020-open-finn-european-championship_e23)

12.3 Signals ashore will be displayed at signal mast located at YKP balcony.

12.4 When flag AP is displayed ashore, '1 minute' is replaced with 'not less than 60 minutes' in the race signal AP.

12.5 [DP] Flag AP over H displayed ashore means 'Boats shall not leave the harbour or shore. Wait for further instructions.' This changes Race Signals AP over H.

## 13 CHANGES TO SAILING INSTRUCTIONS

13.1 Any change to the format or schedule of races will be posted by 2000 on the day before it will take effect and any change to the sailing instructions will be posted before 0930 on the day it will take effect.

## 14 COURSE CHANGES

14.1 Courses will not be shortened. This changes RRS 32. The length and direction of legs of the course may be changed in accordance with RRS 33.

14.2 To change the next leg of the course, the race committee will lay a new mark (or move the gate or a finishing line) and remove the original mark as soon as practicable. When in a subsequent change a new mark is replaced, it will be replaced by an original mark. After mark 1 has been replaced, mark 1a will not be reset. (This changes RRS 33(c))

## 15 PROTESTS AND REQUESTS FOR REDRESS

15.1 Protest forms are available at the Race Office located at Helios Building. Protests and requests for redress or reopening shall be delivered to the Race Office within the appropriate time limit.

15.2 The protest time limit is 60 minutes from the last boat to finish the final race of the day.

15.3 Notices will be posted as soon as possible after the protest time limit to inform competitors of hearings in which they are parties or named as witnesses. Hearings will be held in the protest room, located in YKP building beginning at the time posted which may be before the end of the protest time limit if all parties are available.

15.4 Notices of protests by the race, protest or technical committees may be posted to inform boats under RRS 61.1(b).

15.5 A list of boats that have been penalized under Appendix P for breaking RRS 42 will be posted.

- 15.6 Breaches of SIs marked [NP] will not be grounds for a protest by a boat. This changes RRS 60.1(a).
- 15.7 Penalties for breaches of SIs marked [DP] or class rules are at the discretion of the protest committee and may be less than disqualification, but the IFA approved guidance will be followed.
- 15.8 A boat may accept a discretionary penalty for the breach of a rule subject to [DP] by acknowledging the breach before a hearing.
- 15.9 For breaches of a rule marked [SP], the Race Committee may apply a standard penalty without a hearing or a discretionary penalty may be applied by the International Jury with a hearing. A list of these breaches and the associated standard penalties will be posted on the Official Notice Board. However, the Race Committee may protest a boat when they consider the standard penalty to be inappropriate. A boat that has been penalised with a standard penalty can neither be protested for the same incident by another boat nor can another boat request redress for this race committee action. This changes RRS 60.1, 63.1 and A5.
- 15.10 In RRS 66 change: 'On the last scheduled day of racing...' to 'On the last day of a series...'.
- 15.11 On the last day of a series a request for redress based on a jury decision shall be delivered no later than 30 minutes after the decision was posted. This changes RRS 62.2.

**16 SCORING** – scoring is described in the Format and Scoring appendix.

**17 EQUIPMENT AND MEASUREMENT CHECKS [DP]**

- 17.1 Details of pre-first race equipment inspection, location and schedules will be posted on the official notice board.
- 17.2 Equipment may be inspected at any time for compliance with the class rules and sailing instructions. When instructed by the technical committee, a boat shall proceed immediately to a designated area for inspection.
- 17.3 All items of equipment subject to event limitation control will be marked with the official event stamp or sticker. If a mark becomes unclear, insecure or lost, this shall be reported promptly to the Technical Committee so that the mark may be replaced before the next race or at the first reasonable opportunity.
- 17.4 All boats selected for equipment inspection shall be presented for inspection with the full equipment, including sails, personal flotation device(s) and personal equipment.

**18 REPLACEMENT OF CREW OR EQUIPMENT [DP]**

- 18.1 Substitution of competitors will not be allowed.
- 18.2 Substitution of damaged or lost equipment will not be allowed unless approved by the technical committee. Requests for substitution shall be made at the first reasonable opportunity in writing on a form available from the Race Office.

**19 OFFICIAL BOATS**

- 19.1 Official boats will be marked as follows:

Race Committee	Red flag with Bravo
Jury/Judges	White flag with JURY
Technical Committee	White flag with M
Rescue or Marshalls	Red flag with Bravo
Media	White flag with PRESS

## 20 SUPPORT BOATS [DP]

- 20.1 For the purposes of these sailing instructions a support boat includes any boat that is under the control or direction of a person is defined in the RRS as a support person.
- 21.2 Support boats shall display their national flag or national (NOC Code) letters at least 200mm high and clearly visible from both sides.
- 21.3 Support boats shall not interfere with boats racing or official boats, or create a wake that affects boats racing.
- 21.4 Support boats shall not be positioned:
- 21.4.1 Closer than 50 metres of any boat racing.
  - 21.4.2 Within 50 metres of the starting line and marks from the time of the preparatory signal until all boats have left the starting area, or the race committee signals a postponement, general recall or abandonment.
  - 21.4.3 Between any boat racing and the next mark of the course.
  - 21.4.4 Within 50 metres of any mark of the course while boats are in the vicinity of that mark.
  - 21.4.5 Within 50 metres of the finishing line and marks while boats are finishing.
- 21.5 In addition, support boats that are motoring above 5 knots shall remain at least 150 metres from any boat racing.
- 21.6 Support boats shall comply with any reasonable request from a regatta official.

## 22 IDENTIFICATION, ADVERTISING, CAMERAS and ELECTRONIC EQUIPMENT [DP]

- 22.1 When provided by the organizing authority, boats or crew shall carry, display or wear the following as instructed.
- 22.1.1 Yellow, blue or red bibs.
  - 22.1.2 Yellow, blue or red dots on the mainsail.
  - 22.1.3 Bow numbers.
  - 22.1.4 Event sponsor advertising.
- 22.2 When provided by the organising authority, boats shall carry the following electronic equipment as instructed:
- 22.2.1 Cameras,
  - 22.2.2 Sound equipment, and
  - 22.2.3 Position tracking and timing equipment.
    - (a) Competitors shall collect a tracking module from their assigned tracking desk before racing each day.
    - (b) On return to shore competitors shall return the tracking module within the protest time limit to the same place that they received it.
  - 22.2.4 Competitors shall make a genuine effort to comply with the instructions for operating the equipment as provided by the organising authority.
  - 22.2.5 While competitors should take every care of the equipment, the organising authority alone is liable for loss or damage to the cameras and any equipment used for installing the cameras on the boats.
  - 22.2.6 For the purposes of RRS Part 2 and the related Definitions, cameras and camera installation equipment are not considered to be part of the boat on which they are installed.
  - 22.2.7 Boats shall avoid contact with cameras and camera installation equipment on other boats; however, a breach of this sailing instruction shall not be subject to any penalty.

## 23 BERTHING AND BOAT PARK [DP]

- 23.1 When ashore, boats shall be kept in their assigned places in the boat park.

## 24 RADIO COMMUNICATION [DP]

24.1 A boat shall neither make radio transmissions while racing nor receive radio communications not available to all boats, except in an emergency or when using equipment provided by the race committee. This restriction also applies to mobile telephones.

## 25 PRIZES

25.1 In the Open Fleet, the class perpetual trophies will be awarded, including the winner of the European Championship and U23 European Championship. The Organizing Authority will provide prizes for the top 10 boats overall and top 3 U23. Prizes will be awarded to the skippers finishing first in each race.

25.2 In the Masters Fleet, European Masters prizes will be awarded as described in NoR 13 as a minimum.

25.3 The prize giving ceremony will take place after the races on Sunday, 6<sup>th</sup> September at the Marina Gdynia.

## 26 DISCLAIMER OF LIABILITY

26.1 Competitors participate in the regatta entirely at their own risk. See RRS 4, Decision to Race. Neither the organizing authority nor World Sailing will accept any liability for material damage or personal injury or death sustained in conjunction with or prior to, during, or after the regatta.

VOLVO  
GDYNIA  
SAILING  
DAYS

Organizator:



Partner technologiczny:



Partner Strategiczny:



Sponsor:



Partner Tytułowy:



Partnerzy:



Partneri:



Partneri medialni:



**Sailing Instruction Addendum FS – Format, Time Limits and Scoring.**

**FS1 Format – SINGLE FLEET**

FS1.1 The regatta will consist of a single series.

**FS2 Schedule**

FS2.1 The schedule will be as follows:

Registration for competitors and coaches	Sunday 30th August – Tuesday 1 September
Opening Ceremony	Tuesday 1st September: 1900
First Briefing for coaches/competitors	Wednesday 2nd September: 0930
Practice Race	Tuesday 1st September: 1500
Series	First Warning 1130 or as in daily race schedule
Last Warning Signal	Sunday 6th September: 1500
Closing Ceremony – All events	Sunday 6th September after the races

FS2.2 Spare

FS2.3 Races not sailed on the scheduled day may be sailed on a following day, except that no more than 3 races shall be sailed on any day. A race that the first boat has completed 3 legs before being abandoned, shall count as a scheduled race for the purpose of this SI, but shall not be scored.

**FS 3 Time limits and target times are as follows:**

Stage	Time Limit	Mark 1 Time Limit	Finish Window	Target Time
1 or 2 races per day	120	40	20	75
3 races per day	120	40	20	60

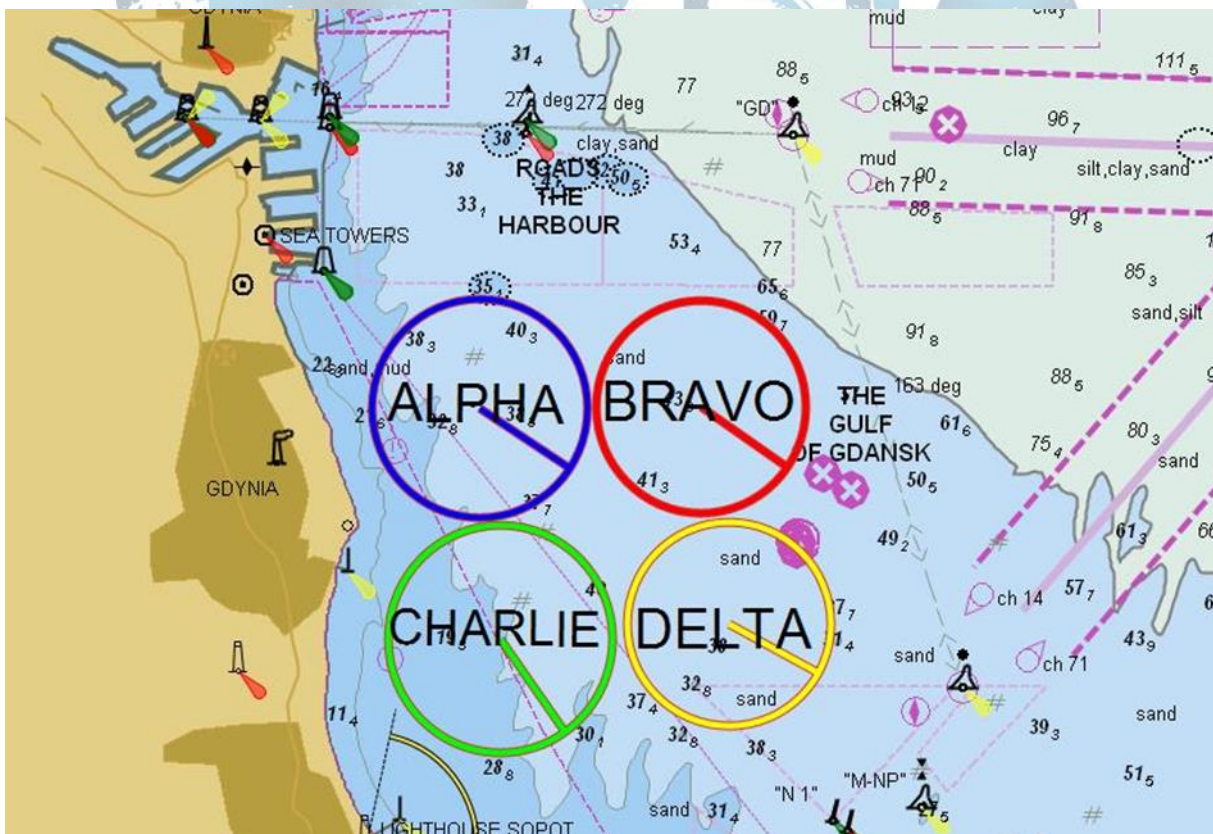
FS3.1 Boats that are still racing but do not finish within the Finish Window, will be scored Time Limit Expired (TLE). The TLE score will be equal to the number of boats to finish plus 2 points. This changes RRS 35, A4 and A5.

FS3.2 If no boat rounds Mark 1 within the Mark 1 time limit, the race committee shall abandon the race.

**FS4 Scoring**

- FS4.1 The Low Point System of RRS Appendix A will apply.
- FS4.2 When fewer than five opening series races have been completed, a boat's series score will be the total of her race scores. When five or more opening series races have been completed, a boat's score will be the total of her race scores excluding her worst score.
- FS4.3 A boat starting later than 4 minutes after her starting signal will be scored Did Not Start. This changes RRS A4 and A5.
- FS4.4 **Four** races are required to be completed to constitute a regatta.
- FS4.6 To request correction of an alleged error in posted race or series results, a boat may complete a scoring enquiry form available at the Race Office.

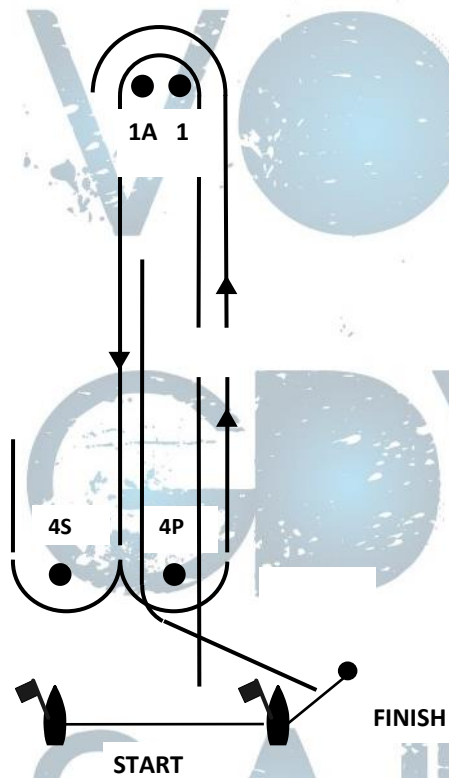
**ADDENDUM A - COURSE AREAS**





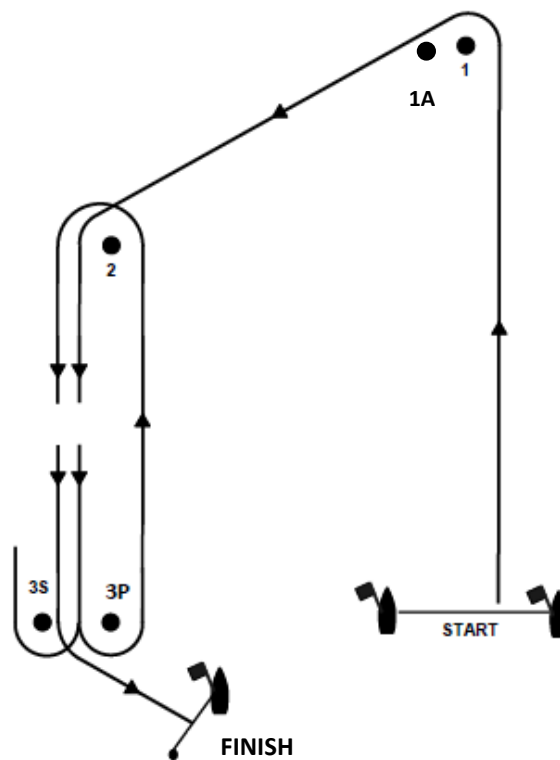
**ADDENDUM B - COURSE ILLUSTRATIONS and MARK ROUNDING ORDER**

**Course for Open Fleet**



Mark rounding order  
 LAR2: START-1-1A-4S/4P-1-1A-4P-FINISH

**Course for Masters Fleet**



Mark rounding order  
 OA2: START-1-1A-2-3S/3P-2-3P-FINISH